



Jack Richeson  
& Co., Inc.

(P) 920.738.0744 / 1.800.233.2404

(F) 920.738.9156 / 1.800.233.2545

[www.richesonart.com](http://www.richesonart.com)



## **RICHESON OILS** *The Shiva Series*

Most affordable professional  
oils on the market!

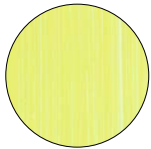
- Traditional Old World pigments
- Professional quality, economically priced
- Brilliant, rich colors
- Buttery, reliable consistency
- High permanency, free from fading, darkening, yellowing and cracking
- Available in over 80 colors

*Professionally formulated to satisfy the most discerning master painter!*

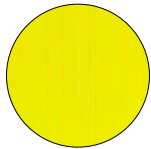
**RICHESON OILS** *The Shiva Series*  
 Available in over 80 colors in 1.25oz and 5oz.

**COLOR CHART KEY:**

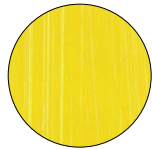
**Lightfastness:** (LF) Excellent - 1 Very Good - 2 Fair - 3 Series: (S) 1, 2, 3, 4, 5, 6  
**Opacity:** Opaque - O Transparent - T Semi-Opaque - SO Semi-Transparent - ST



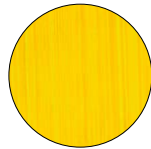
**Nickel Titanate**  
 120105 / 125105  
 LF1 - S3 - SO  
 PY53 Nickel Antimony Titanium



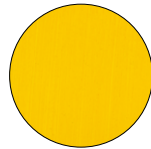
**Cadmium Yellow Light**  
 120018 / 125018  
 LF1 - S4 - O  
 PY35:1 Cadmium Seleno-Sulfide Coprecipitated with Barium Sulfate



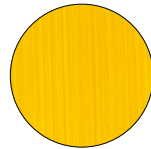
**Hansa Yellow Pale**  
 120029 / 125029  
 LF2 - S2 - SO  
 PY3 Arylide Yellow 10G



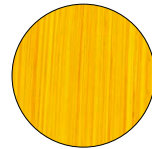
**Hansa Yellow**  
 120027 / 125027  
 LF2 - S2 - SO  
 PY74 Arylide Yellow



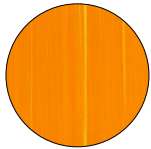
**Cadmium Yellow Med.**  
 120019 / 125019  
 LF1 - S4 - O  
 PY35:1 Cad Seleno-Sulfide Coprecipitated w/ Barium Sulfate - PY65 Arylide Yellow RN



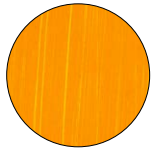
**Hansa Yellow Medium**  
 120028 / 125028  
 LF2 - S2 - SO  
 PY65 Arylide Yellow RN - PY3 Arylide Yellow 10G



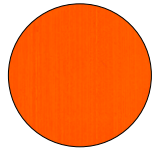
**Indian Yellow**  
 120021 / 125021  
 LF1 - S3 - SO  
 PY83 Disazo (Diarylide) Yellow



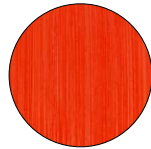
**Cadmium Orange**  
 120023 / 125023  
 LF1 - S4 - O  
 PO20:1 Cad Seleno-Sulfide Coprecipitated w/ Barium Sulfate



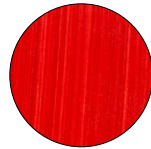
**Shiva Orange**  
 120024 / 125024  
 LF3 - S2 - SO  
 PY65 Arylide Yellow RN - PO16 Diarylide Orange



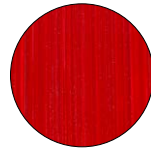
**Pyrrole Orange**  
 120104 / 125104  
 LF1 - S5 - SO  
 PO73 Diketopyrrolopyrrole



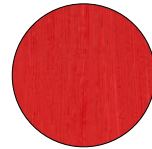
**Cadmium Red Pale**  
 120013 / 125013  
 LF1 - S4 - O  
 PR108:1 and PO20:1 Cad Seleno-Sulfide Coprecipitated w/ Barium Sulfate



**Naphthol Red Light**  
 120088 / 125088  
 LF1 - S2 - ST  
 PR112 Naphthol Red AS



**Naphthol Red Medium**  
 120014 / 125014  
 LF2 - S2 - SO  
 PR170 Naphthol Red



**Cadmium Red Scarlet**  
 120012 / 125012  
 LF1 - S4 - O  
 PR108:1 Cad Seleno-Sulfide Coprecipitated with Barium Sulfate



**Cadmium Red Deep**  
 120010 / 125010  
 LF1 - S4 - O  
 PR108:1 Cad Seleno-Sulfide Coprecipitated w/ Barium Sulfate



**Permanent Alizarin**  
 120083 / 125083  
 LF1 - S4 - T  
 PR177 Anthraquinone Red



**Quinacridone Red**  
 120084 / 125084  
 LF1 - S3 - T  
 PV19 Quinacridone



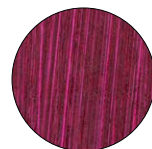
**Rose Madder**  
 120011 / 125011  
 LF3 - S3 - ST  
 PR83 1,2-Dihydroxyanthraquinone Lake - PY3 Arylide Yellow 10G



**Alizarin Crimson**  
 120007 / 125007  
 LF3 - S3 - T  
 PR83 1,2-Dihydroxyanthraquinone Lake



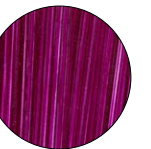
**Shiva Red Crimson**  
 120015 / 125015  
 LF3 - S2 - T  
 PR83 1,2-Dihydroxyanthraquinone Lake - PV19 Quinacridone



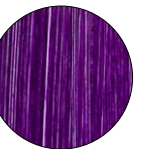
**Quinacridone Rose**  
 120009 / 125009  
 LF1 - S5 - T  
 PR122 Quinacridone Red - PV19 Quinacridone



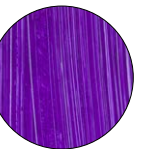
**Quinacridone Magenta**  
 120086 / 125086  
 LF1 - S3 - T  
 PR122 Quinacridone Red



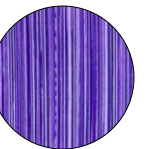
**Quinacridone Violet**  
 120087 / 125087  
 LF1 - S3 - T  
 PV19 Quinacridone



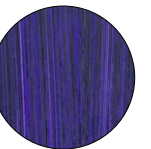
**Manganese Violet**  
 120040 / 125040  
 LF1 - S3 - SO  
 PV16 Manganese Ammonium Phosphate



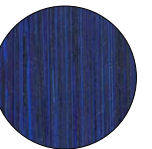
**Cobalt Violet**  
 120039 / 125039  
 LF1 - S6 - O  
 PV14 Cobalt Violet Phosphate



**Ultramarine Violet**  
 120089 / 125089  
 LF1 - S2 - T  
 PV15 Silicic acid, Aluminum sodium salt, sulphurized



**Dioxazine Violet**  
 120041 / 125041  
 LF1 - S2 - ST  
 PV23 Dioxazine Violet - PB29 Sodium Alumino Sulphosilicate



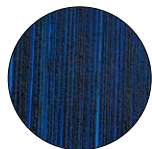
**Indanthrene Blue**  
 120102 / 125102  
 LF1 - S3 - T  
 PB60 Indanthrene Blue, anthraquinone



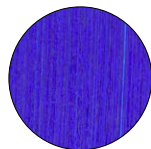
**Phthalo Blue Deep**  
 120031 / 125031  
 LF1 - S2 - T  
 PB15 Copper Phthalocyanine



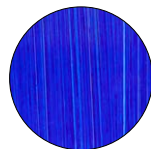
**Phthalo Blue Light**  
 120038 / 125038  
 LF1 - S2 - T  
 PB15:4 Copper Phthalocyanine



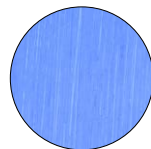
**Prussian Blue**  
 120033 / 125033  
 LF1 - S2 - T  
 PB27 Ferric Ammonium Ferrocyanide



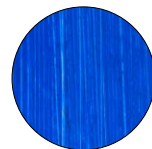
**Ultramarine Blue Deep**  
 120034 / 125034  
 LF1 - S2 - T  
 PB29 Sodium Alumino Sulphosilicate



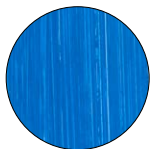
**Ultramarine Blue Light**  
 120035 / 125035  
 LF1 - S2 - T  
 PB29 Sodium Alumino Sulphosilicate



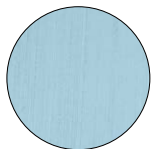
**King's Blue**  
 120101 / 125101  
 LF1 - S3 - O  
 PW6 Titanium Dioxide - PW4 Zinc Oxide - PB29 Sodium alumino sulphosilicate



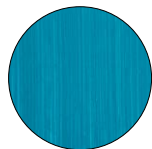
**Cobalt Blue**  
 120032 / 125032  
 LF1 - S5 - T  
 PB28 Oxides of Cobalt and Aluminium



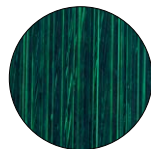
**Cerulean Blue**  
 120031 / 125031  
 LF1 - S6 - SO  
 PB36 & PB28 Oxides of Cobalt and Aluminium



**Ice Blue**  
 120036 / 125036  
 LF1 - S2 - ST  
 PW6 Tit. Dioxide - PB7 Nat Iron Oxide - PB27 Ferric Ammon. Ferrocyanide



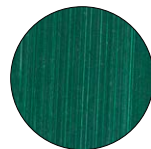
**Turquoise**  
 120030 / 125030  
 LF1 - S2 - SO  
 PW6 Tit. Dioxide - PB15 Phthalocyanine Copper - PG7 Chlorinated Copper



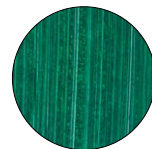
**Phthalo Green Blue Shade**  
 120048 / 125048  
 LF1 - S2 - T  
 PG7 Chlorinated Copper Phthalocyanine



**Phthalo Green Yellow Shade**  
 120090 / 125090  
 LF1 - S2 - T  
 PG36 Brom. and Chlor. Copper Phthalocyanine



**Cobalt Green Deep**  
 120110 / 125110  
 LF1 - S5 - O  
 PG26 Cobalt Chromium Oxide



**Viridian**  
 120044 / 125044  
 LF1 - S4 - T  
 PG18 Hydrated Chromium Oxide

**RICHESON OILS** *The Shiva Series*  
Available in over 80 colors in 1.25oz and 5oz.

**COLOR CHART KEY:**

**Lightfastness: (LF)** Excellent - 1 Very Good - 2 Fair - 3 **Series: (S)** 1, 2, 3, 4, 5, 6  
**Opacity:** Opaque - O Transparent - T Semi-Opaque - SO Semi-Transparent - ST



**Cobalt Green**  
120111 / 125111  
LF1 - S5 - O

PG50 Cobalt Titanate Green Spinell



**Chrome Oxide Green Light**  
120050 / 125050  
LF1 - S3 - O

PG17 Chromium Oxide - PW6 Titanium Dioxide



**Chrome Oxide Green Deep**  
120049 / 125049  
LF1 - S3 - O

PG17 Chromium Oxide



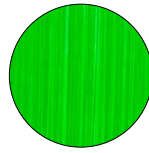
**Terra Verte**  
120045 / 125045  
LF1 - S2 - O

PG17 Chrom Oxide - PBK11 Synthetic Iron Oxide - PW6 Titanium Dioxide - PB29 Sodium Alumino Sulpho



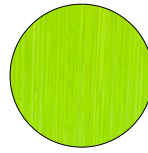
**Sap Green**  
120043 / 125043  
LF1 - S2 - ST

PG7 Chlorinated Copper - PBK7 Carbon Black - PY74 Phthalocyanine Arylide Yellow



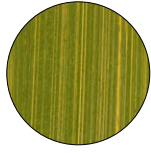
**Cadmium Green**  
120047 / 125047  
LF1 - S4 - SO

PY35:1 Cadmium Seleno-Sulfide Coprecipitated w/Barium Sulfate - PG7 Chlorinated Copper Phthalocyanine



**Shiva Yellow Citron**  
120026 / 125026  
LF2 - S2 - O

PY3 Arylide Yellow 10G - PW6 Titanium Dioxide - PG17 Chromium Oxide



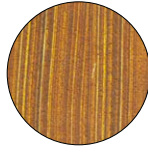
**Green Gold**  
120058 / 125058  
LF1 - S2 - O

PY65 Arylide Yellow RN - PG17 Chromium Oxide



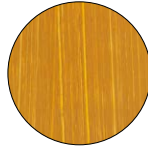
**Leaf Green**  
120046 / 125046  
LF1 - S2 - SO

PY65 Arylide Yellow RN - PBK11 Synthetic Iron Oxide



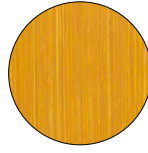
**Transparent Yellow Oxide**  
120092 / 125092  
LF1 - S3 - T

PY42 Transparent Synthetic Iron Oxide Hydrate



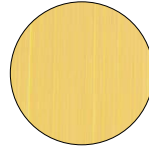
**Golden Ochre**  
120057 / 125057  
LF1 - S1 - O

PY42 Synthetic Iron Oxide



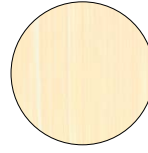
**Yellow Ochre**  
120017 / 125017  
LF1 - S1 - ST

PY42 Synthetic Iron Oxide - PR103 Natural Iron Oxide



**Naples Yellow**  
120020 / 125020  
LF1 - S2 - SO

PW6 Titanium Dioxide - PY42 Synthetic Iron Oxide - PY74 Arylide Yellow



**Yellow Ochre Pale**  
120016 / 125016  
LF1 - S2 - O

PW6 Titanium Dioxide - PY42 Synthetic Iron Oxide



**Unbleached Titanium**  
120022 / 125022  
LF1 - S1 - SO

PW6 Titanium Dioxide - PY42 Synthetic Iron Oxide - PB7 Natural Iron Oxide - PY3 Arylide Yellow 10G



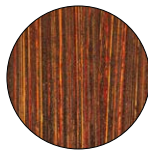
**Raw Sienna**  
120053 / 125053  
LF1 - S1 - ST

PY43 Natural Iron Oxide



**Burnt Sienna**  
120051 / 125051  
LF1 - S1 - O

PR102 Natural Iron Oxide



**Transparent Orange Oxide**  
120103 / 125103  
LF1 - S3 - T

PR101 Synthetic Iron Oxide - PY42 Transparent Synthetic Iron Oxide Hydrate



**Venetian Red**  
120008 / 125008  
LF1 - S1 - SO

PR102 Natural Iron Oxide - PR101 Synthetic Iron Oxide



**Light Red**  
120006 / 125006  
LF1 - S2 - SO

PR101 Synthetic Iron Oxide - PR102 Natural Iron Oxide



**Transparent Red Oxide**  
120091 / 125091  
LF1 - S3 - T

PR101 Synthetic Iron Oxide Transparent



**Asphaltum**  
120055 / 125055  
LF1 - S3 - SO

PR101 Synthetic Iron Oxide - PBK9 Bone Black - PY74 Arylide Yellow



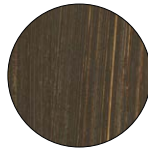
**Van Dyke Brown**  
120056 / 125056  
LF1 - S1 - SO

PR102 Natural Iron Oxide - PB7 Natural Iron Oxide



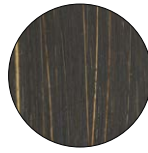
**Burnt Umber**  
120052 / 125052  
LF1 - S1 - O

PB7 Natural Iron Oxide



**Raw Umber**  
120054 / 125054  
LF1 - S1 - O

PB7 Natural Iron Oxide



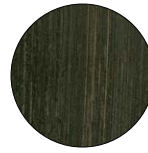
**Raw Umber Cool**  
120082 / 125082  
LF1 - S1 - O

PB7 Natural Iron Oxide - PBK11 Synthetic Iron Oxide



**Burnt Umber Cool**  
120081 / 125081  
LF1 - S1 - O

PB7 Natural Iron Oxide



**Olive Green**  
120042 / 125042  
LF1 - S2 - SO

PBK9 Bone Black - PY65 Arylide Yellow RN - PG17 Chromium Oxide



**Payne's Gray**  
120005 / 125005  
LF1 - S2 - ST

PBK9 Bone Black - PB29 Sod Alum Sulph - PBK7 Carbon Black



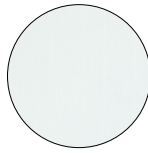
**Ivory Black**  
120003 / 125003  
LF1 - S1 - SO

PBK9 Bone Black



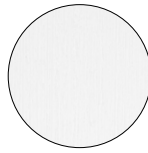
**Mars Black**  
120004 / 125004  
LF1 - S1 - O

PBK11 Synthetic Iron Oxide



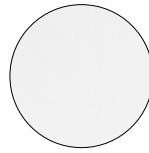
**Transparent Marble White**  
120096 / 120097  
LF1 - T

PW6 Titanium Dioxide - PR112 Naphthol AS



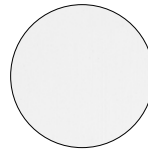
**Ultra White**  
120002 / 120063  
LF1 - S1 - O

PW6 Titanium Dioxide - PW4 Zinc Oxide



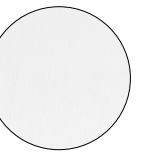
**Zinc White**  
120001 / 120060  
LF1 - S1 - O

PW4 Zinc Oxide



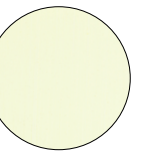
**Titanium Zinc White**  
120061\* / 120065\*  
LF1 - S1 - SO

PW4 Zinc Oxide - PW6 Titanium Dioxide



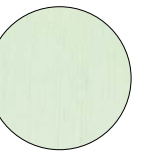
**Titanium White**  
120000 / 120059  
LF1 - S1 - O

PW6 Titanium Dioxide - PW4 Zinc Oxide



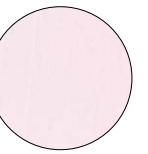
**Brilliant Yellow Light**  
120025 / 125025  
LF1 - S2 - SO

PW6 Titanium Dioxide - PY3 Arylide Yellow 10G



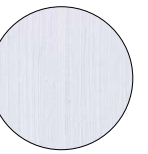
**Brilliant Green Light**  
120106 / 125106  
LF1 - S2 - O

PW6 Titanium Dioxide - PY74 Arylide Yellow - PG36 Cu Phthalocyanine Brom.



**Brilliant Pink Light**  
120107 / 125107  
LF1 - S2 - O

PW6 Titanium Dioxide - PR112 Naphthol AS



**Brilliant Violet Light**  
120108 / 125108  
LF1 - S2 - O

PW6 Titanium Dioxide - PV23 Dioxazine Violet

**Richeson Oils**

- 120061\***  
5oz Titan. Zinc White
- 120065\***  
16oz Titan. Zinc White
- 120066**  
16oz Titanium White
- 120067**  
16oz Zinc White



## Richeson Oil Sets

### Basic Set of 6

Includes 1.25oz. tubes of: titanium white, ivory black, naphthol red medium, hansa yellow, ultramarine blue deep and phthalo green (blue shade).

120068

### Master Signature® Set of 6

Includes 1.25oz. tubes of: titanium white, Prussian blue, yellow ochre, sap green, burnt umber and rose madder.

120999

### Wooden Box Set of 6

Contains the same colors as above (#120068), but this assortment comes packaged in an elegant, slide-top wooden box.

120079

### Wooden Box Set of 12

This set of 12 contains 1.25oz tubes which are presented in a wooden slide-top box. The included colors are: titanium white, ivory black, rose madder, naphthol red medium, yellow ochre, Shiva orange, hansa yellow, phthalo blue deep, ultramarine blue light, phthalo green (blue shade), burnt sienna and burnt umber.

120080

### Richeson Oils & Cradled Panel Sets

Includes 1.25oz. tubes of Richeson Oils in a cradled gessoed panel. \*Panels are non-standard size.

1203031 3 Color Panel Set

1203061 6 Color Panel Set

1203091 9 Color Panel Set

1203121 12 Color Panel Set



## Grey Matters & Linseed Soap

### Grey Matters™ Paper Palette

- Acid-free smooth surface
- Toned in neutral grey for artists who work on a toned surface
- Great backdrop for viewing and mixing
- Especially great for transparent colors

- 100279 30shts 6" x 9"
- 100280 50shts 9" x 12"
- 100281 50shts 12" x 16"
- 100289 30shts 16" x 20"

### Jack's Linseed Studio Soap

- Use to clean brushes, hands, floors, work surfaces and more!
- Made from naturally refined linseed oil
- No harsh chemicals
- Cleans and conditions oil brushes

- 120735 1oz. (30ml)
- 120740 4oz. (120ml)
- 120745 8oz. (250ml)
- 120750 16oz. (500ml)
- 120755 32oz. (1000ml)

