

Monet's Bridge using DecoArt's Wax Effects
3-5 grades



National Visual Arts Standards:

Grades 3-5

Creating

1.1, 1.2, 2.1, 2.2, 2.3, 3.1

Responding

7.1, 7.2, 8.1, 9.1

Connecting

11.1

Objectives

- The students will create an artwork in the manner of the Impressionists.
- The students will experiment with new media.

Materials:

DecoArt Wax Effects Paint

8 x 8" heavy art paper

Oil pastels

Paintbrushes

Water

The lesson begins by looking at the artwork of the Impressionists. The teacher will explain the style of painting that the Impressionists were known for in which they painted quickly in order to catch a moment - an impression - by using short, quick brushstrokes. This lesson will focus on Claude Monet and

his garden with the Japanese bridge.

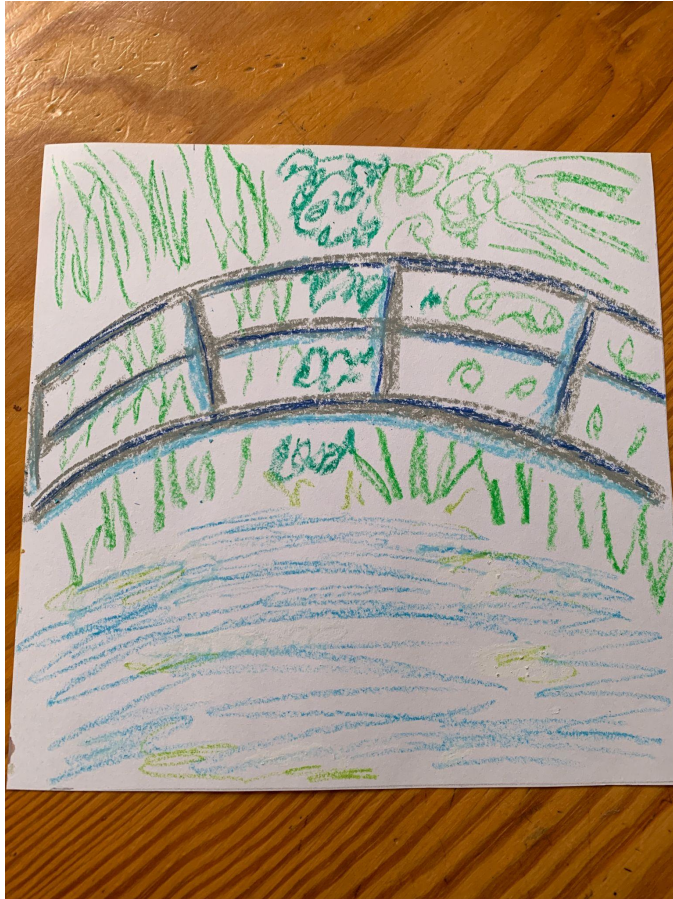


Water Lilies and Japanese Bridge,1899.

The students will be using DecoArt's Wax Effects Paint which simulates encaustic painting. This paint will help the students to achieve a technique similar to the Impressionists.

1. The teacher will give each student an 8 x 8" piece of paper. The teacher will instruct the students to use oil pastels and sketch a Japanese bridge like Monet's across the center of their paper from one edge to the other. They will only be drawing with lines and not coloring in with the pastels. The students will also use the oil pastels to sketch in gardens around their

bridge with a water-lily pond. They can look at Monet's painting for inspiration but may choose their own plants and colors.



2. Next, the students will choose colors of DecoArt's Wax Effects paint to add another layer to their artwork. They can paint right over the top of their oil pastel drawings. The teacher will instruct students to use short brush strokes and lines like the Impressionists.



3. After allowing that layer of paint to dry , students can add more layers of the Wax Effects paint using the same colors or different ones. The Wax Effects Paint dries pretty quickly. The Wax Effects Paint is translucent and allows under-layered colors to still be seen.



The paints can also be applied in heavy layers or built up to create impasto.

4. The teacher will encourage students to experiment with different techniques they can use with DecoArts Wax Effect paints. The teacher will instruct students to make sure to highlight their bridge so that it is emphasized in the center of their gardens. Students may also choose to add more oil pastel on top of their dried Wax Effects paint layers. How does the finished works compare to Monet's art and the art of the Impressionists?

Vocabulary

Impressionists

Encaustic

Impasto